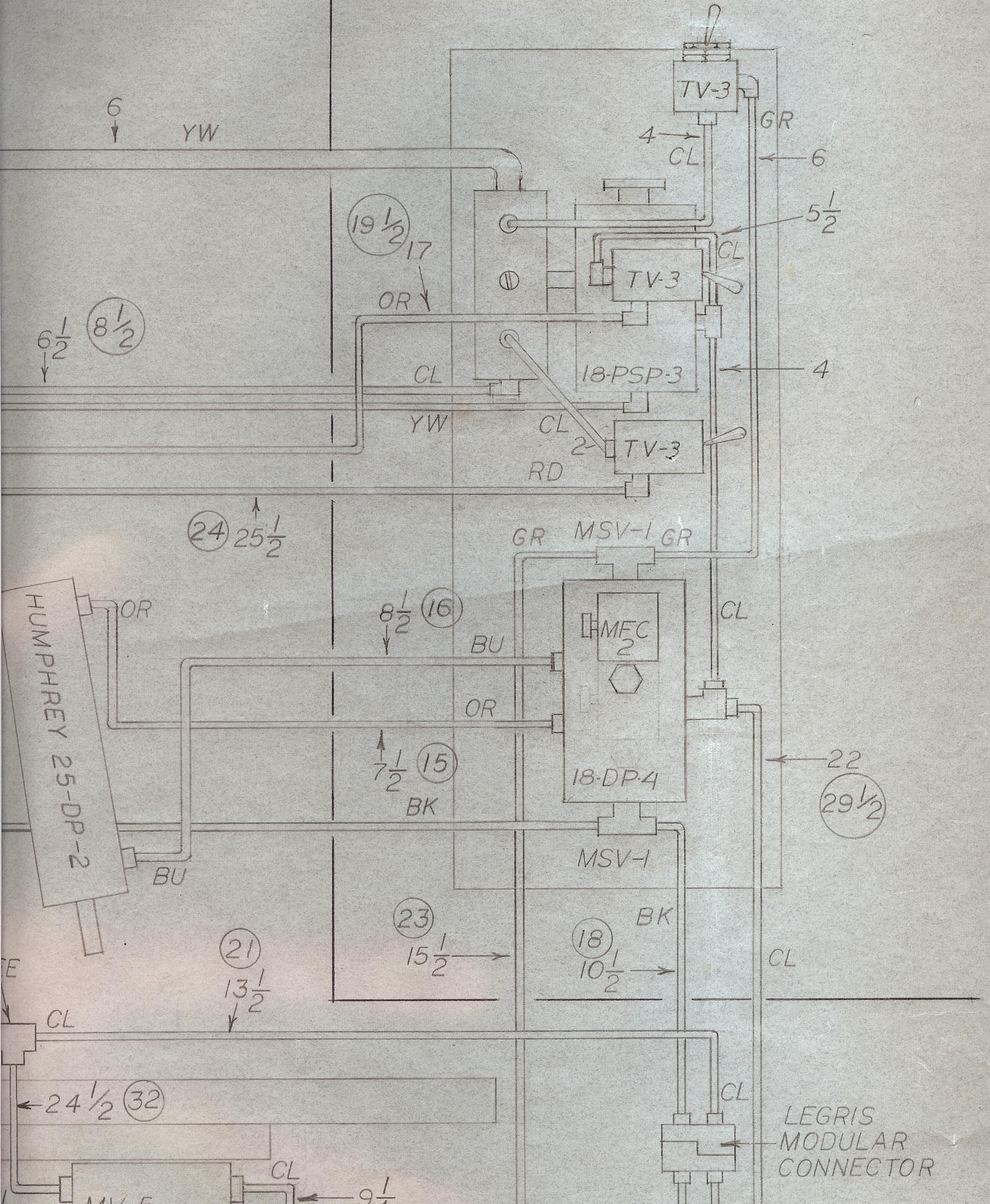


RIGHT SIDE

REV. 2-5-91

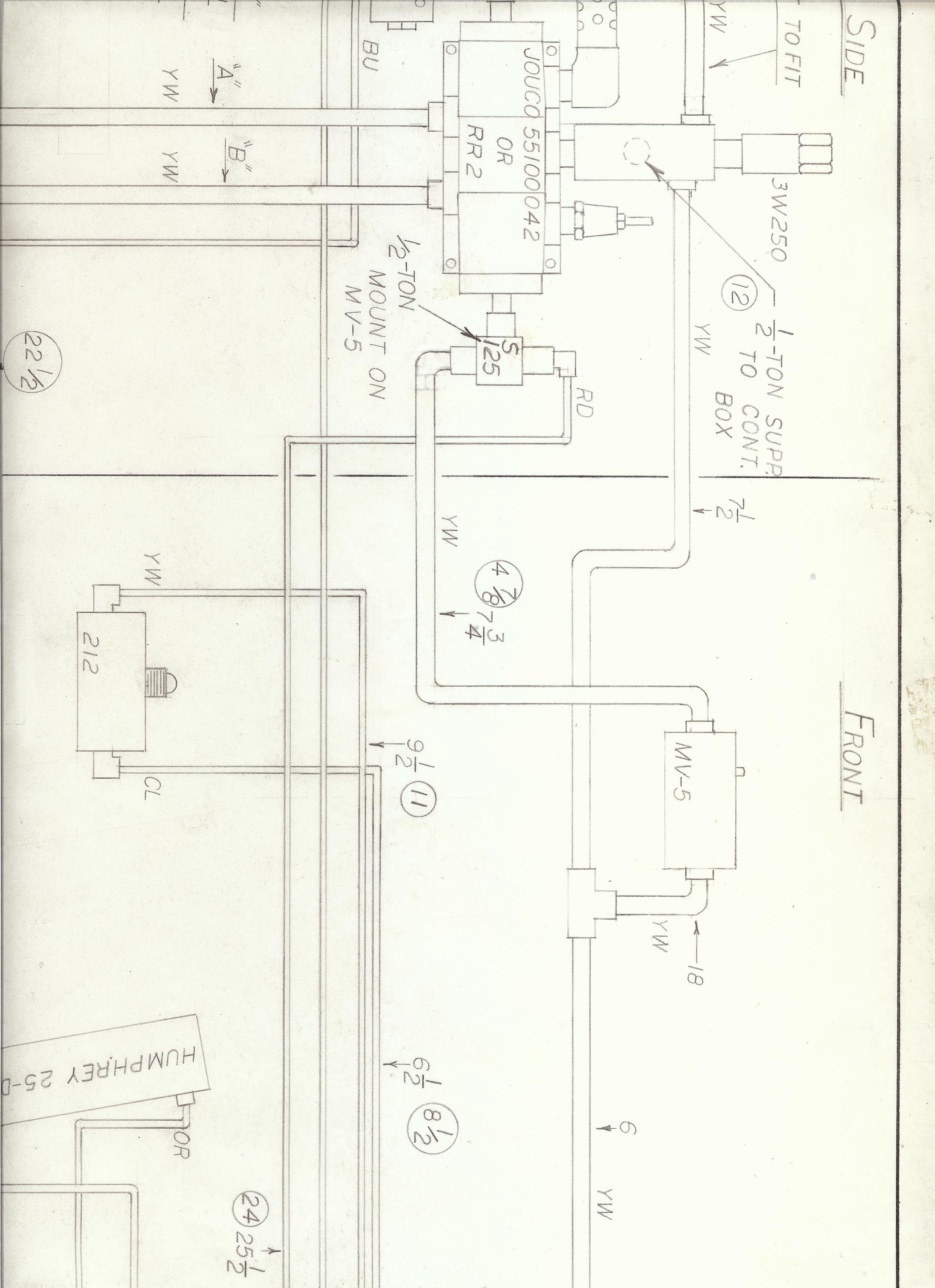




SIDE

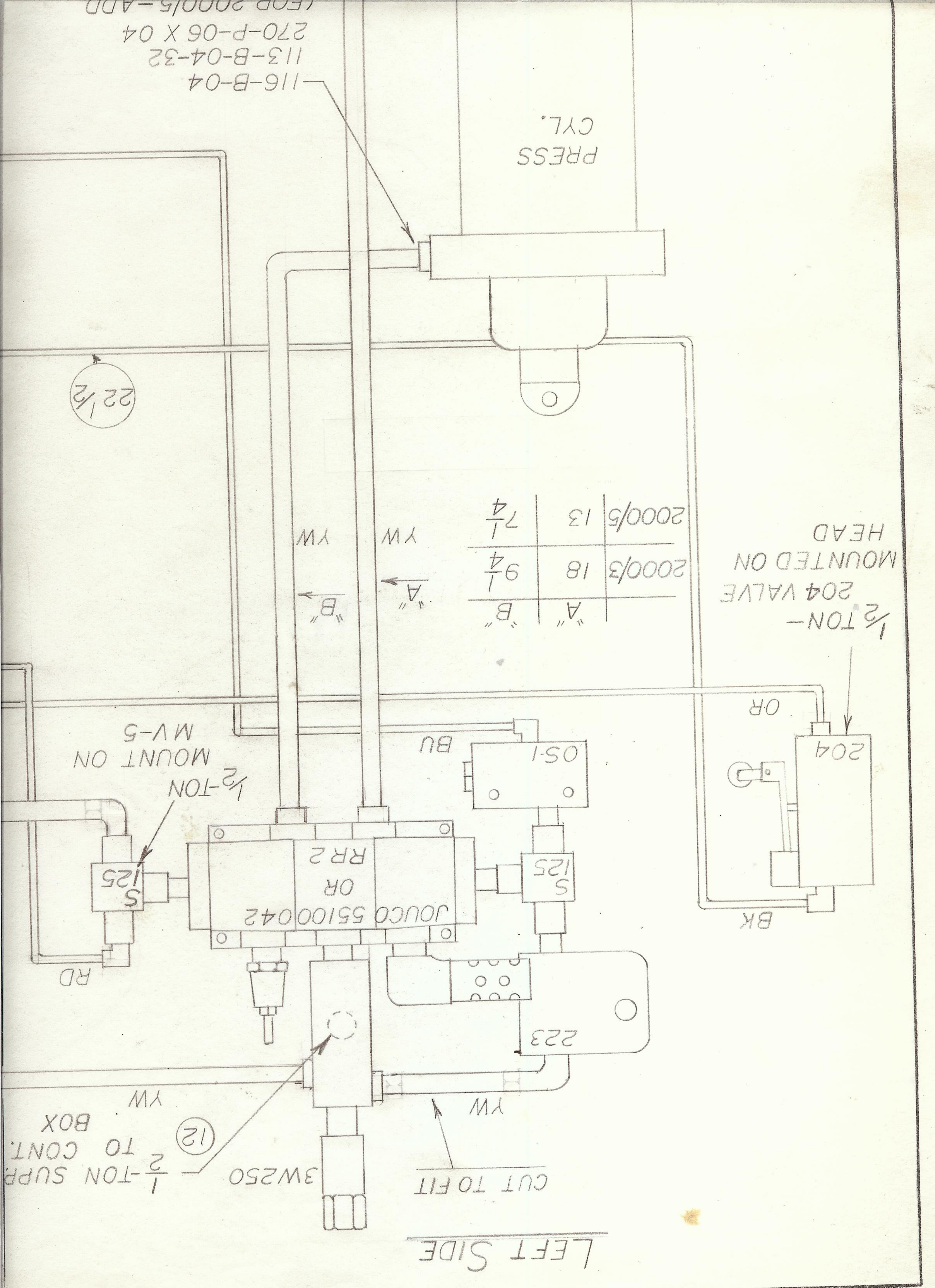
TO FIT

FRONT





LEFT SIDE



1/2 TON -  
204 VALVE  
MOUNTED ON  
HEAD

A	B	2000/3	18	9 1/4	Y W
A	B	2000/5	13	7 1/4	Y W

116-B-04

113-B-04-32

270-P-06 X 04

22 1/2

1/2-TON  
MOUNT ON  
MV-5

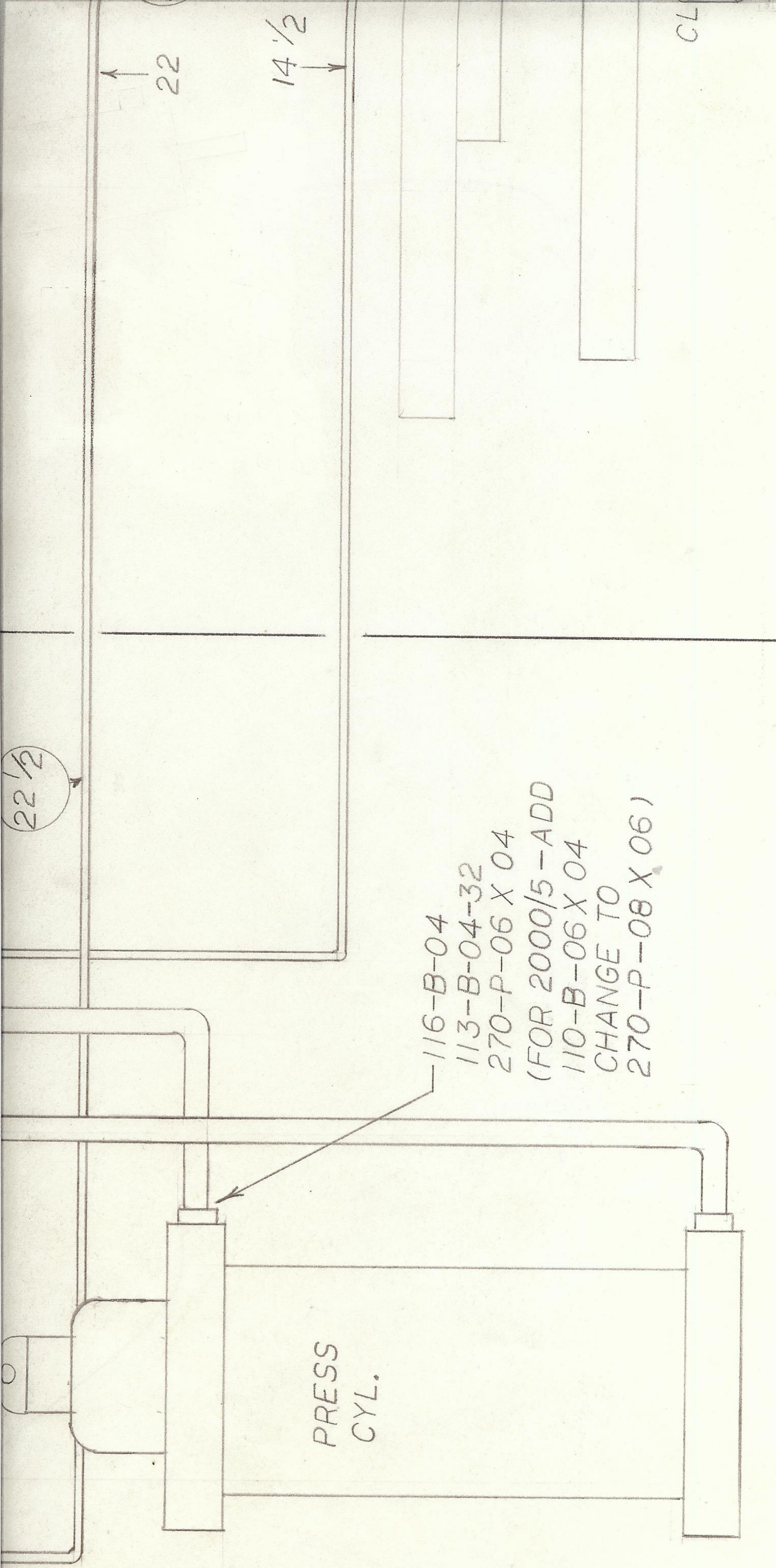
1/2-TON

1/2-TON SUPP  
TO CONT.  
BOX

12

CUT TO FIT





116-B-04  
 113-B-04-32  
 270-P-06 X 04  
 (FOR 2000/5 - ADD  
 110-B-06 X 04  
 CHANGE TO  
 270-P-08 X 06)

COLOR CODE

- BU — BLUE
- BK — BLACK
- GR — GREEN
- OR — ORANGE
- RD — RED
- YW — YELLOW
- CL — CLEAR

$\frac{1}{2}$ -TON LENGTHS  
 CIRCLED

CL

CL

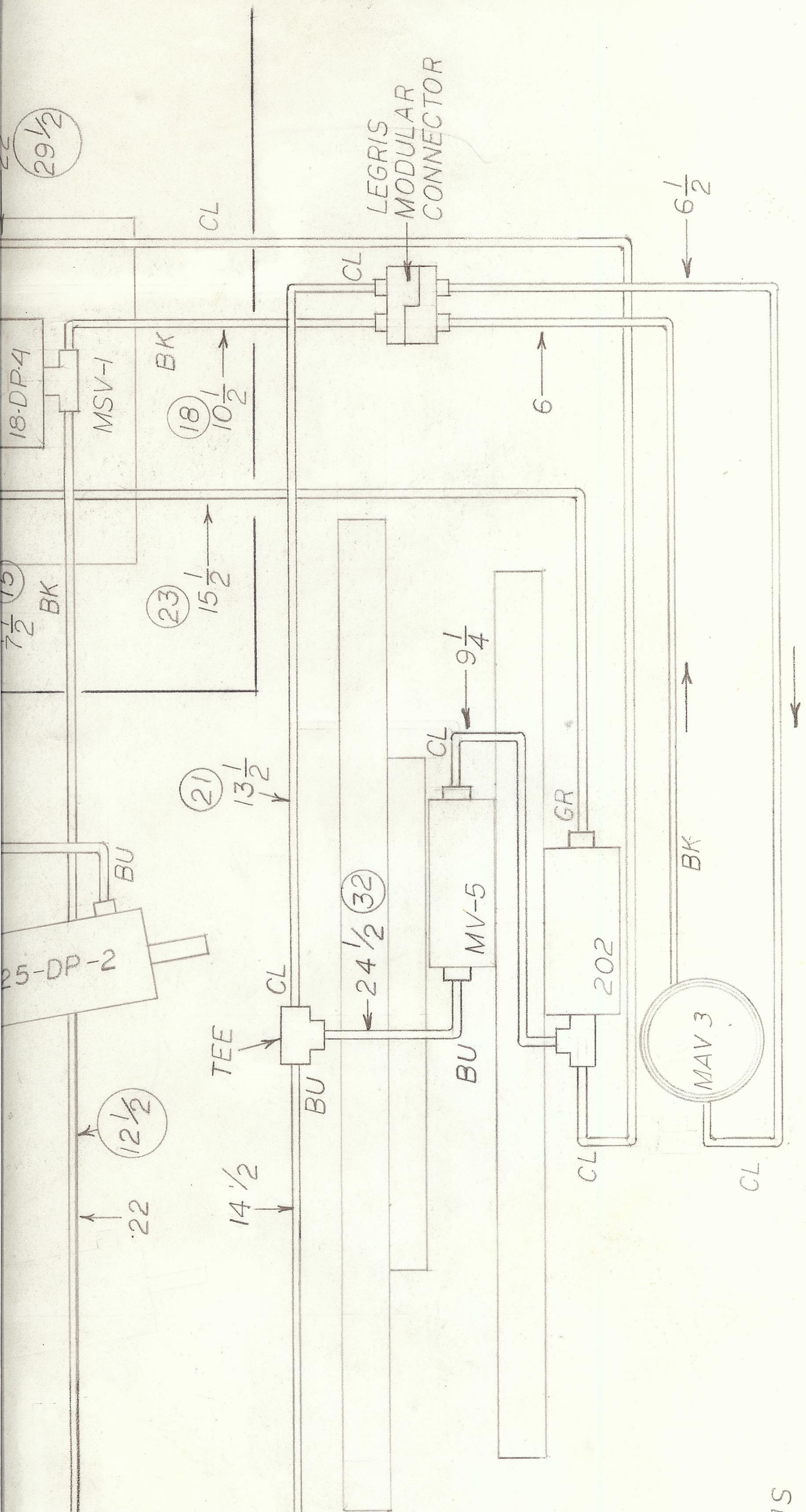
22

$14\frac{1}{2}$

$22\frac{1}{2}$

PRESS  
 CYL.





JORACO INC

APPROVED BY

DRAWN BY

SCALE:

DATE: 7-19-85

PNEUMATIC LAYOUT - INDEXER

INCLUDES PRESS, INDEXER, AND SAFETY SWITCH

DRAWING NUMBER

1103